

Kensington

Cottage Elevation

2,070 Sq. Ft. Living Space

440 Sq. Ft. Garage

Price: \$290,400

- 3 Bedrooms
- 2.5 Baths
- Vaulted & Tray Ceilings
- First Floor Master Bedroom
- Bonus Room Above Garage

Spec Upgrades:

- Satin Nickel Hardware
- Brushed Chrome Plumbing Fixtures
- Above Cabinet Lighting in Kitchen
- Overhead Lighting in Kitchen
- Raised Vanity in Master Bath
- (1) Escape Well in Lower Level
- Rough-In Full Bath in Lower Level



VINEYARD
HOME SERIES

HOMES BY  **simon group**

WinterPark - Lot 1

12136 W. Barnard Ave.

Greenfield, WI 53228

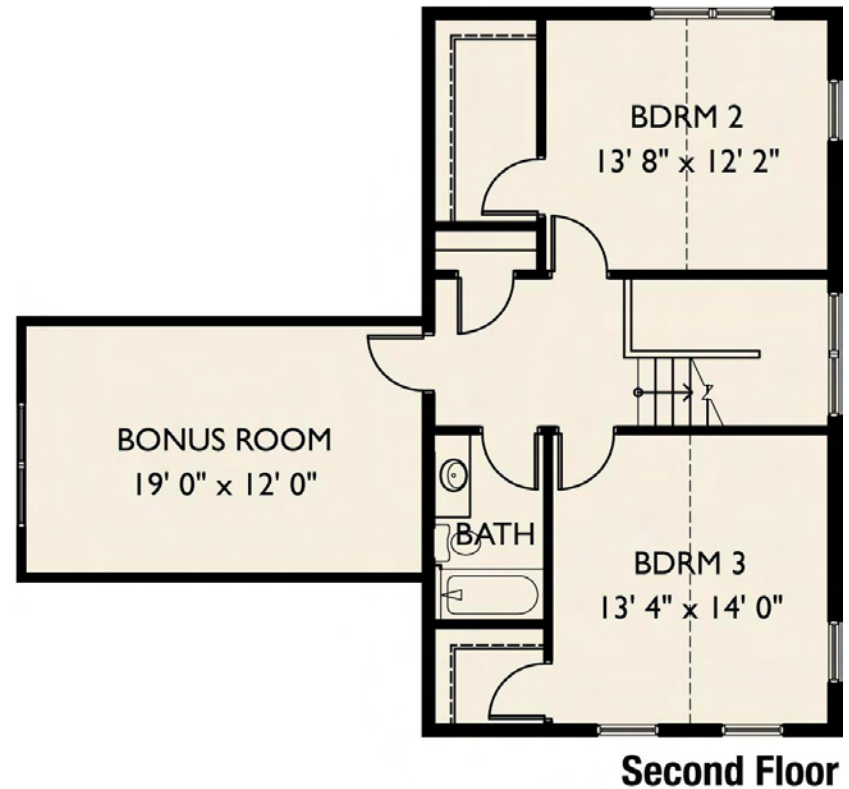
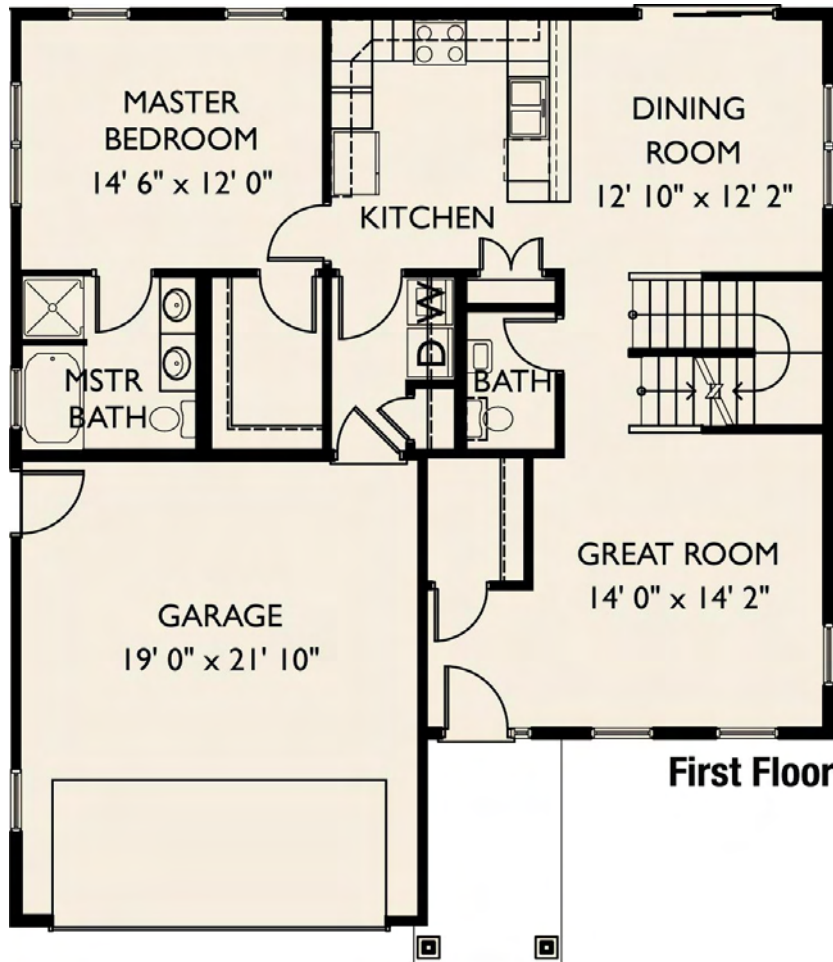
Contact: Beth Savas (414) 303-9444 of The Stefaniak Group

Occupancy: 12/01/08

www.simongroup.net

Kensington

2,070 Sq. Ft. Living Space
440 Sq. Ft. Garage



* Renderings and floor plans are the artist's conception. Details and dimensions may vary from actual plans. Simon Group reserves the right to modify or change plans without notice.