

# Burwick

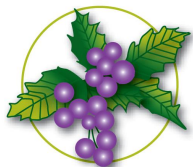
**Craftsman Elevation**  
**1,406 Sq. Ft. Living Space**  
**485 Sq. Ft. Garage**

**Price: \$238,662**

- 3 Bedrooms
- 2 Baths
- Split Bedroom Ranch
- Vaulted Ceilings

## **Spec Upgrades:**

- Hardwood Floors
- Under Cabinet Lighting in Kitchen
- Brushed Chrome Plumbing Fixtures
- (1) Escape Well in Lower Level
- Rough-In Full Bath in Lower Level



**VINEYARD**  
HOME SERIES

HOMES BY  **simon group**

## **High Grove Estates - Lot 18**

1742 Shumann Drive  
Union Grove, WI 53182

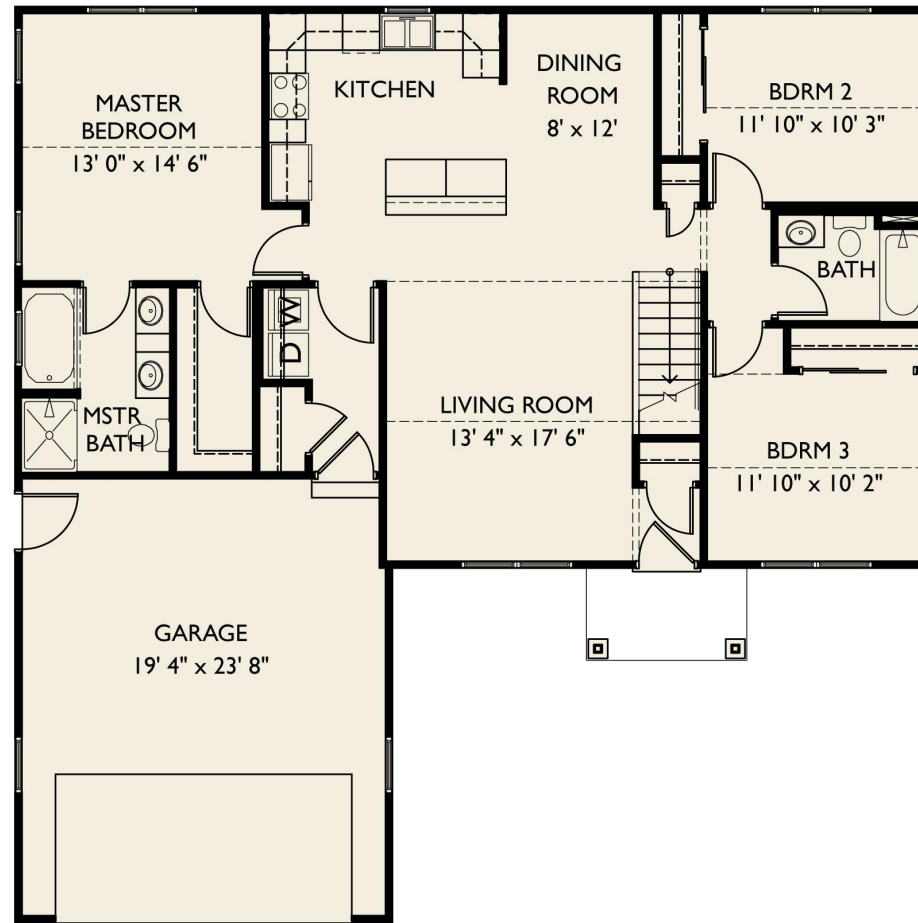
**Contact:** Beth Savas (414) 303-9444 of The Stefaniak Group

**Occupancy:** Spring 2009

[www.simongroup.net](http://www.simongroup.net)

# Burwick

1,406 Sq. Ft. Living Space  
485 Sq. Ft. Garage



\* Renderings and floor plans are the artist's conception. Details and dimensions may vary from actual plans. Simon Group reserves the right to modify or change plans without notice.